

EXPO 2015 MEXICAN PAVILION

EXPO 2015 MEXICAN PAVILION

Location

Milano, Italy

Client

ProMéxico

Contractor

Nussli Italia S.r.l.

Scope of work

Design, fabrication and installation of steel structures

Period of execution

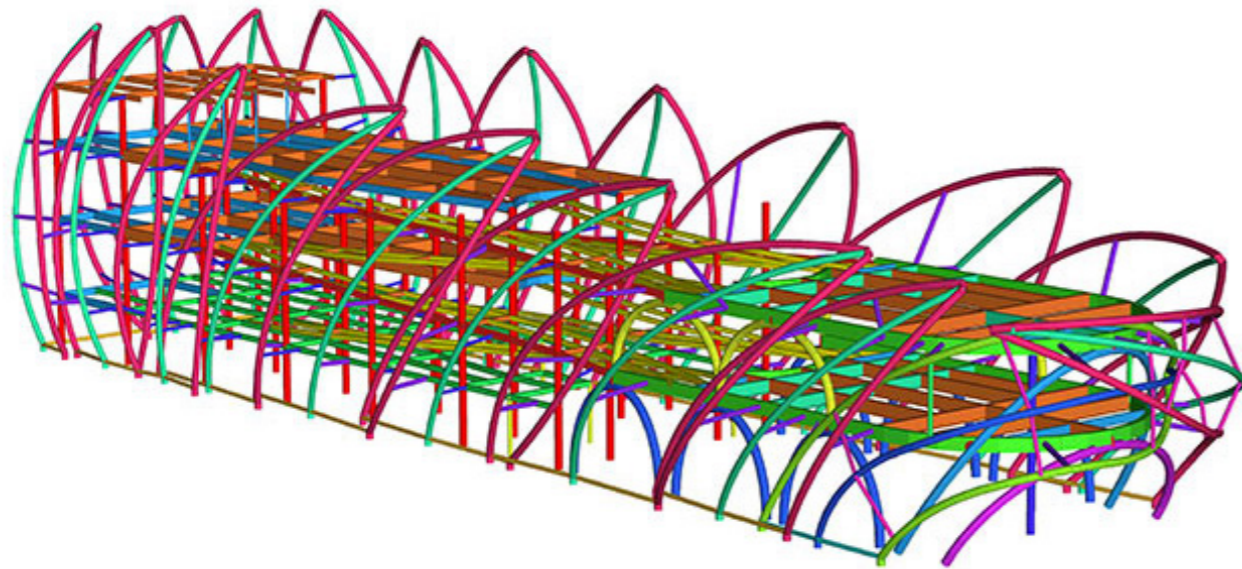
2015

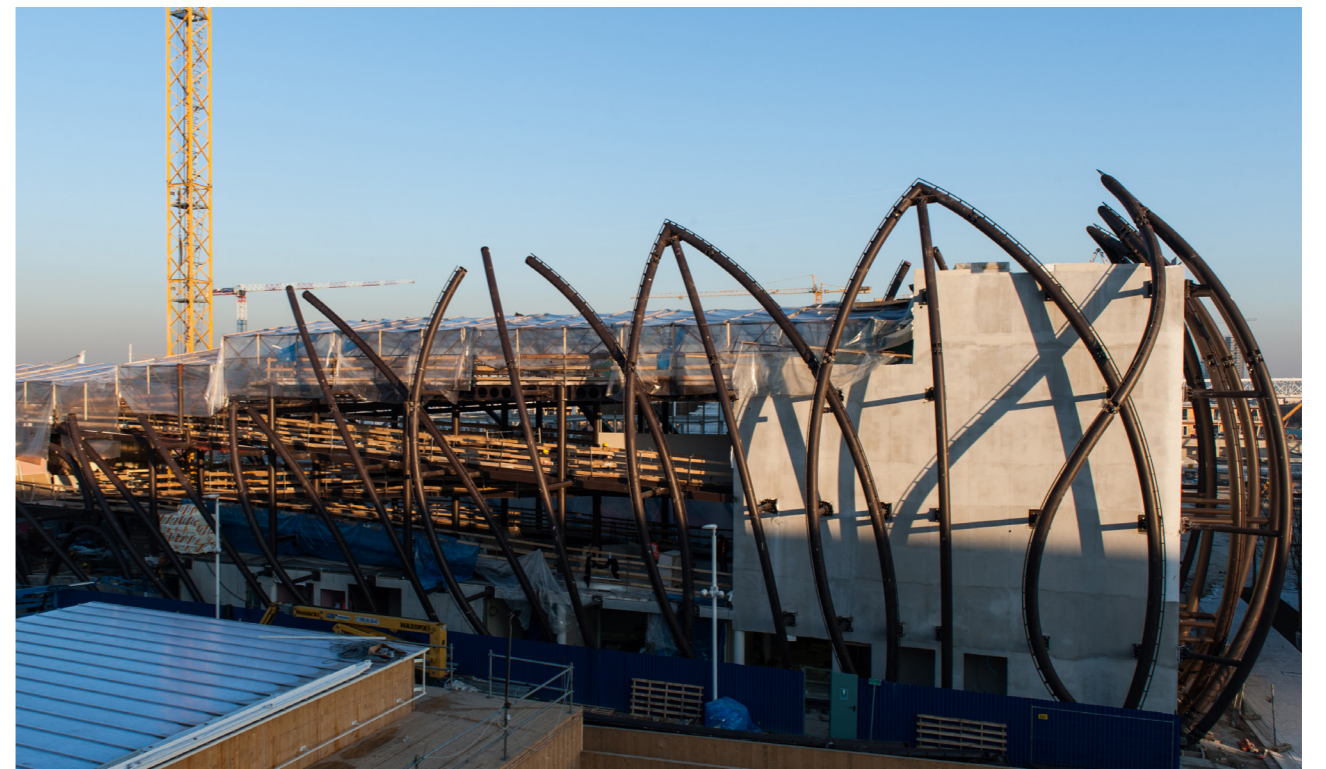
Weight

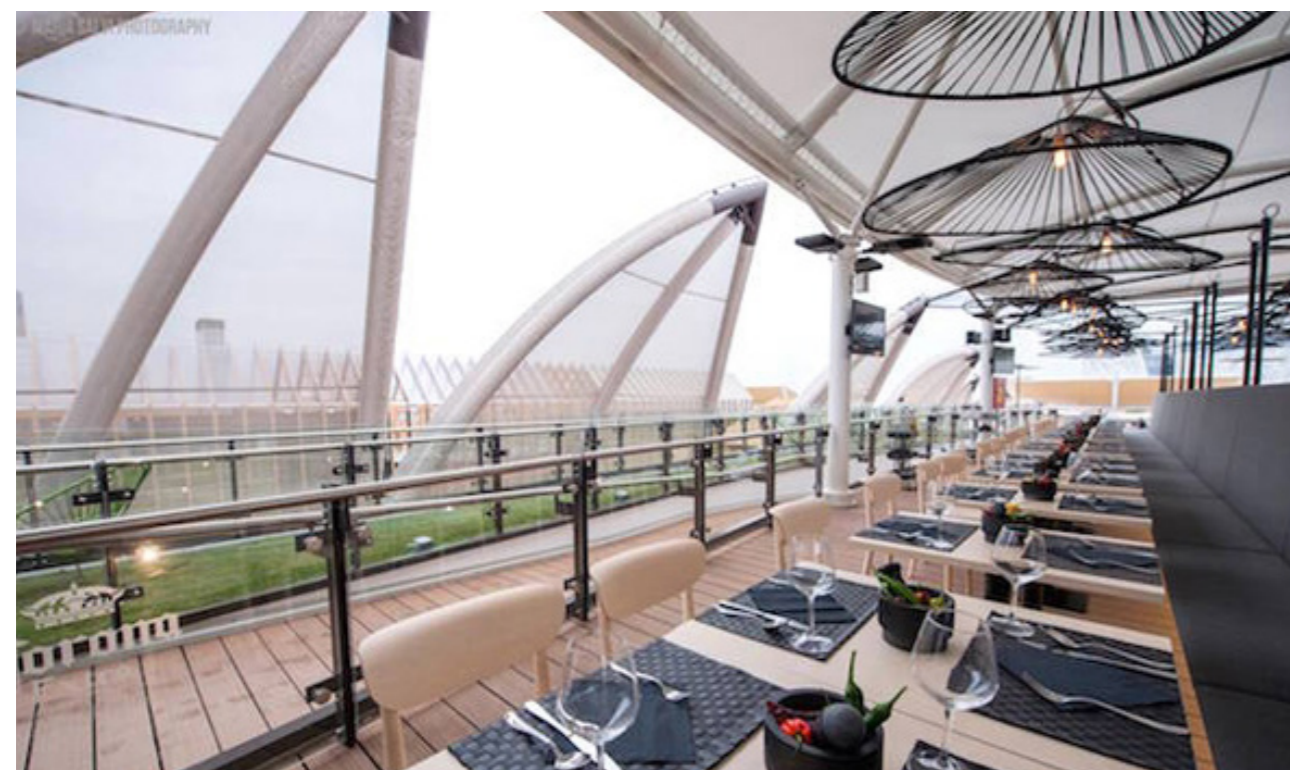
450 tons

Built for the Expo 2015 in Milan with the topic “Feeding the Planet, Energy for Life”, this temporary pavilion resembles the shape of the corn, base ingredient of the Aztec culture and inspiration of the designer.

The expository building is a horizontal parallelepiped of six floors made of steel beams IPE 400 and rectangular beams composed by welding plates with a thickness of 12 mm. The external structure of the pavilion is composed of curved tubular profiles with a circular section and a diameter of 355 mm, wrapped with a membrane made of dense-weft canvas that filters natural light and reduces energy consumption, recalling the shape of the corn's leaf. This combination has been awarded with the Expo sustainability prize. The pavilion has a height of 14 meters for a weight of 448 tons.









Ideas
shape
the
World

Maeg Costruzioni S.p.A.
Via Toniolo 40
31028, Vazzola (TV) - Italy
+39 0438 441558
www.maegspa.com